

# Booktabs Package with LyX

Jonathan Dreyer

November 25, 2012

## 1 Installation

1. In the LyX menu go to Document > Settings and select the “ $\text{\LaTeX}$  Preamble” tab option.
2. Add `\usepackage{booktabs}` to the text box as shown below and select OK to save.

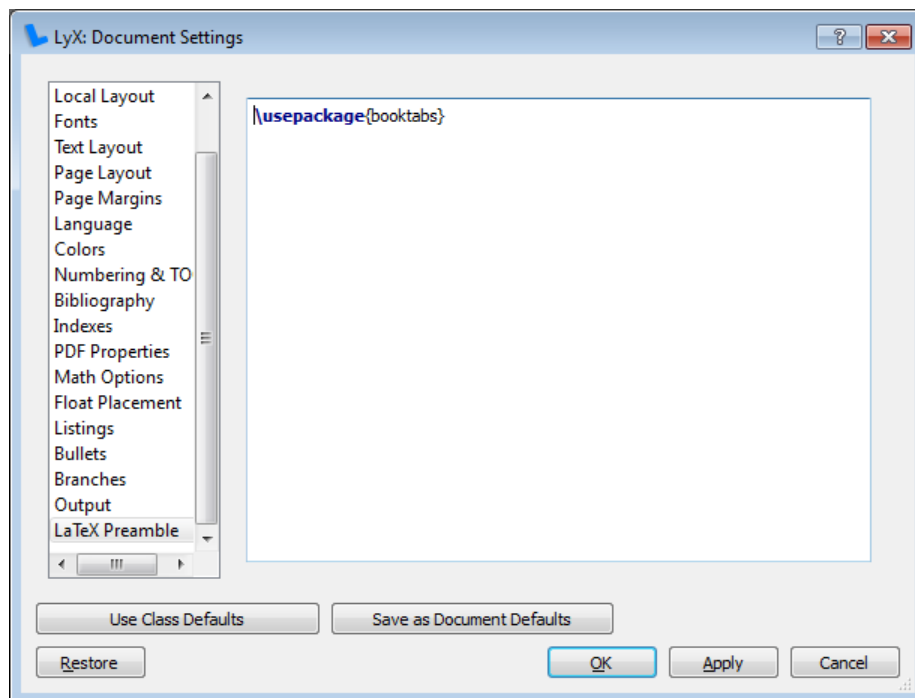


Figure 1: LyX Settings for using the m-code package.

## 2 Example Usage of Booktabs Package in LyX

1. Create a table without any borderlines. Note: Do not use the `borderline` options available in LyX as these will not be centered properly.

Table 1: Basic table with no borderlines. Data available from the U.S. Nuclear Regulatory Commission website

Plant Name	Location	Licensed MWt	2011 Capacity Factor (Percent)
Arkansas Nuclear One	London, AR		
Unit 1		2568	87
Unit 2		3026	90
Beaver Valley Power Station	Shippingport, PA		
Unit 1		2900	101
Unit 2		2900	92
Braidwood Station	Braceville, IL		
Unit 1		3586.6	101
Unit 2		3586.6	93
Browns Ferry Nuclear Plant	Limestone County, AL		
Unit 1		3458	91
Unit 2		3458	80
Unit 3		3458	87
Byron Station	Byron, IL		
Unit 1		3586.6	88
Unit 2		3586.6	93

- Place the cursor in the first cell of the table, before *Plant Name* in this example, and from the LyX menu select *Insert > T<sub>E</sub>X Code*. In the code box enter `|toprule`. In the first column of the second row, *Arkansas Nuclear One* in this example, insert another T<sub>E</sub>X Code box and enter `|midrule{}`. Lastly, in the last row, right-most column add a T<sub>E</sub>X Code box with `|tabularnewline|bottomrule%`.

Table 2: Table with a basic set of borderlines using the `|toprule`, `\midrule{}`, and `\tabularnewline|bottomrule%` booktabs commands.

Plant Name	Location	Licensed MWt	2011 Capacity Factor (Percent)
Arkansas Nuclear One	London, AR		
Unit 1		2568	87
Unit 2		3026	90
Beaver Valley Power Station	Shippingport, PA		
Unit 1		2900	101
Unit 2		2900	92
Braidwood Station	Braceville, IL		
Unit 1		3586.6	101
Unit 2		3586.6	93
Browns Ferry Nuclear Plant	Limestone County, AL		
Unit 1		3458	91
Unit 2		3458	80
Unit 3		3458	87
Byron Station	Byron, IL		
Unit 1		3586.6	88
Unit 2		3586.6	93

- For additional divisions, insert a T<sub>E</sub>X Code in the row below where you would like the borderlines added and insert `|cmidrule{N-M}` where the borderline starts at column *N* and ends at column *M*. Various arrangements are shown in the table below.

Table 3: Table with additional borderlines using the `\cmidrule{N-M}` command.

Plant Name	Location	Licensed MWt	2011 Capacity Factor (Percent)
Arkansas Nuclear One	London, AR		
Unit 1		2568	87
Unit 2		3026	90
Beaver Valley Power Station	Shippingport, PA		
Unit 1		2900	101
Unit 2		2900	92
Braidwood Station	Braceville, IL		
Unit 1		3586.6	101
Unit 2		3586.6	93
Browns Ferry Nuclear Plant	Limestone County, AL		
Unit 1		3458	91
Unit 2		3458	80
Unit 3		3458	87
Byron Station	Byron, IL		
Unit 1		3586.6	88
Unit 2		3586.6	93